



TRUCKERS GENERAL INDUCTION

Container Terminal Limassol aims to operate in a safe and efficient manner. For this purpose, the present manual was prepared.

Carefully read through this leaflet in order to inform yourself of the new operation mode.

Eurogate Container Terminal Limassol Ltd
New Port of Limassol
P.O.Box 51309, 3504 Limassol, Cyprus

SECURITY



- Driver and passengers must possess and display at the ISPS Gate a Truck Driver Security Card (issued by Cyprus Ports Authority).
- A National ID card or any other official identifying document must be available upon request.
- The entire Container Terminal Limassol is subject to the provisions of the ISPS code. These provisions include random security checks and possible restrictions that may change from time to time.
- Photography / videography is not allowed in the terminal.



SAFETY



The speed limit is 30km/h



No overtaking



High visibility jacket must be worn in the Terminal, when outside of the vehicle.



Day lights (low beams) must always be on



Drivers and Passengers may only exit their vehicle in the loading / unloading part of the Transfer Area.

Walking is not allowed in the terminal areas.



No smoking or open lights in the Terminal.



National Traffic Code is in effect within the Terminal.

Parking is only allowed at the Transfer Area slots, or any other designated and marked Truck Parking areas.



Trucks must be in a safe driving condition.



The Driver enters the Terminal by display of their **Trucker Security Card**

Truck receiving cargo documents

1. Release reference for import containers
2. Release reference for empty containers

Truck delivering cargo documents

1. Booking number for export containers
2. Liner code for empties
3. Turn-in reference
4. Additional information; e.g. special permissions

ADDITIONAL DOCUMENTS

The Driver may be requested to present the following documents at any time:

- Motor Insurance
- Vehicle Technical Check (MOT)
- Drivers' licence
- Vehicle motor permit
- Driver ADR (when applicable)
- Vehicle ADR (when applicable)

Unavailability of any of these documents may result to a denial of service or immediate discharge from the Terminal.



TERMINAL ENTRY

1. The truck enters the Terminal via the ISPS Gate (Lady's Mile) and drives to the Container In Gate via the Truck Road.
2. There are three **Transfer Areas (TA)** where containers are loaded/unloaded
3. The **Transfer Area (TA)** number is given at the In Gate. There is a number of waiting slots available at each TA. The truck proceeds to the TA number given at the In Gate.
 - The procedure for **TA1** and **TA2** is the same. **TA1** and **TA2** services both empty and full container using **Straddle Carriers**.
 - The procedure for **TA3** is different. **TA3** only services empty containers using **Empty Stackers**.

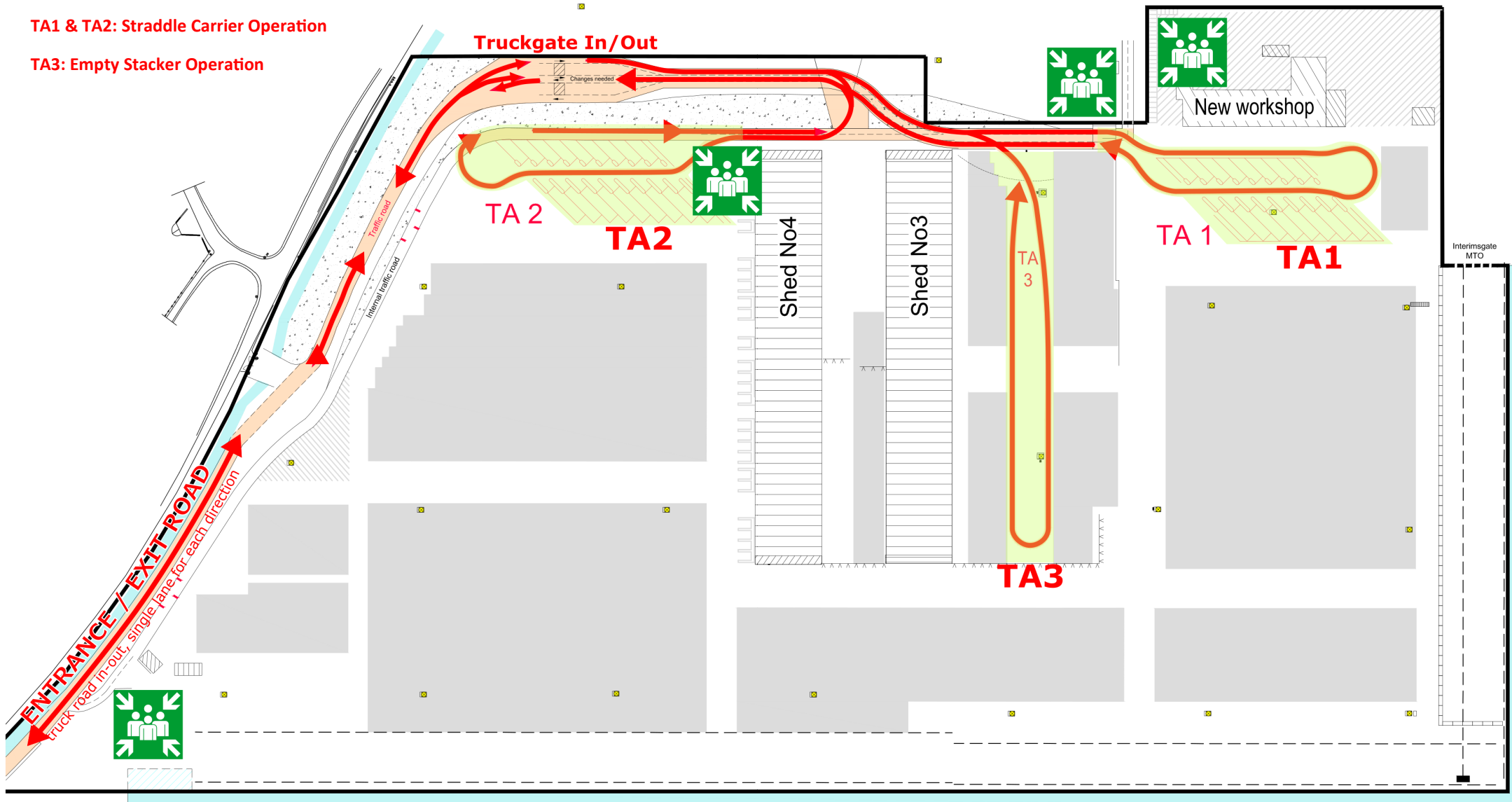
TERMINAL EXIT

- The Truck exits via the Truck Out Gate, receiving an Interchange Receipt and proceeds for exit via the ISPS Gate (Lady's Mile).



TA1 & TA2: Straddle Carrier Operation

TA3: Empty Stacker Operation

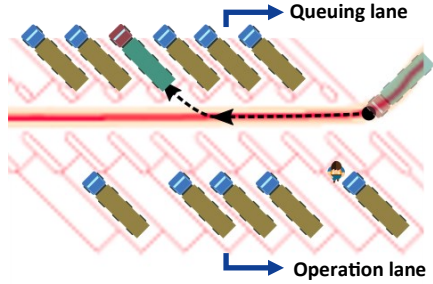




TA1 & TA2— Straddle Carriers

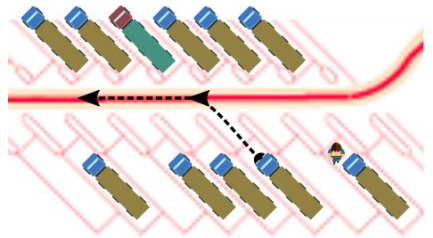
1

Truck A enters queuing lane



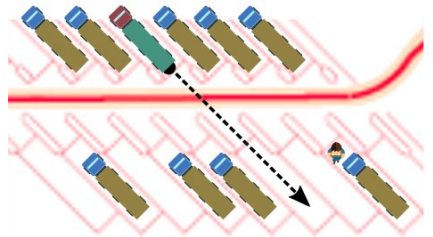
2

Truck B leaves operation lane



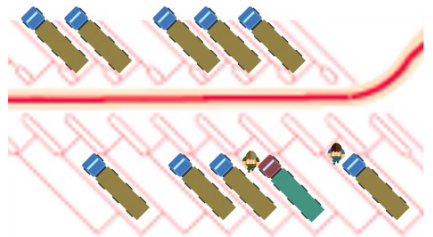
3

Truck A enters operation lane from queuing lane



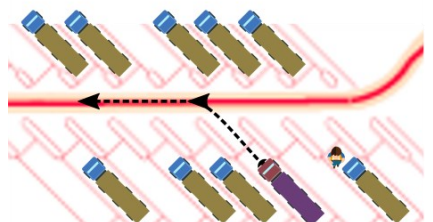
4

Truck A is loaded/unloaded in operation lane when driver exits



5

Truck A leaves operation lane



TA3— Empty Stackers

1

The Truck arrives at TA3 and positions near an Empty Stacker.



2

The Driver waits by the door of the Driver seat.



3

When container is loaded / unloaded, the Truck leaves the TA3

GENERAL INSTRUCTIONS FOR ALL TRANSFER AREAS

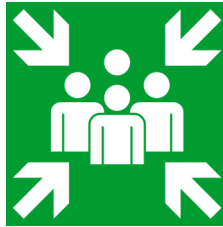
- Loading / Unloading at transfer areas will only be serviced if the truck driver is standing at the designated location by the side of his truck at a loading / unloading slot.
- The driver has the responsibility to ensure his container has been unlocked before unloading and locked before departure. Any damages related to the unsafe handling of twist locks are deemed to be the sole responsibility of the driver.



- In cases of problems while in the terminal, the driver shall call the Port-Wide phone number for assistance:

00357 25 858 899

- In case of a port-wide emergency, instructions may be given to evacuate. Truckers must evacuate using their vehicle in an orderly fashion, while checking out at the ISPS Gate.
- In the case that evacuation using their vehicle is impossible, they must proceed to the nearest evacuation assembly point, indicated on the map by this sign:



UNDERSTANDING AND ACCEPTING THESE TERMS



- In order for your Security Card to be valid, you must hand in to Eurogate, a signed **Form of Consent**, that you have duly read and signed the present manual.
- You may acquire a Form of Consent (TR-003-LF) from the Eurogate website (www.eurogate.eu) or from your employer.
- I understand that Eurogate may utilise the data provided from me for the purposes of Security, communicating information to vessels, agents and Government Authorities.
- Any violation of these regulations may lead to the immediate withdrawal of the permission to enter the EUROGATE Container Terminal Limassol.